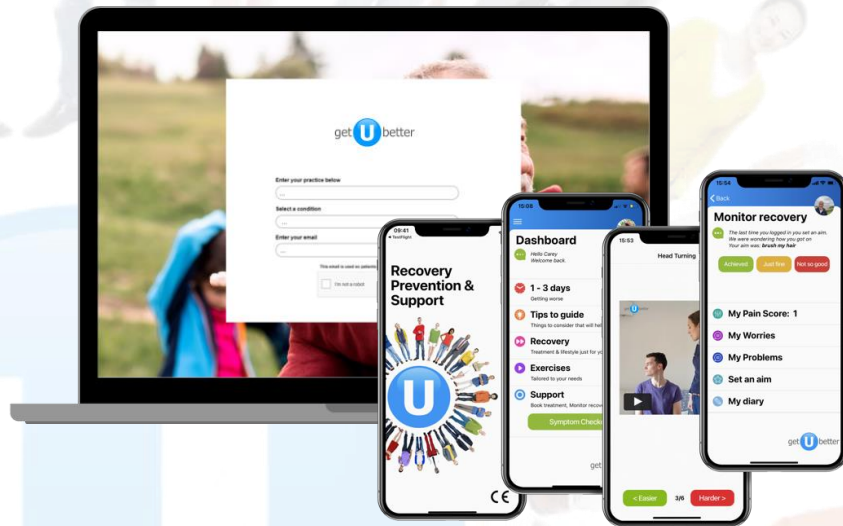


# Digital self-management of all common musculoskeletal conditions across an Integrated Care System (ICS)



INTEGRATED, LOCALLY CONFIGURED,  
AND **DIGITALLY ENABLED MSK PATHWAYS**

# REAL WORLD DATA AND EVIDENCE



# Publications

PEMAT-AV Understanding 86% Action 88% (Wanless et al 2019)

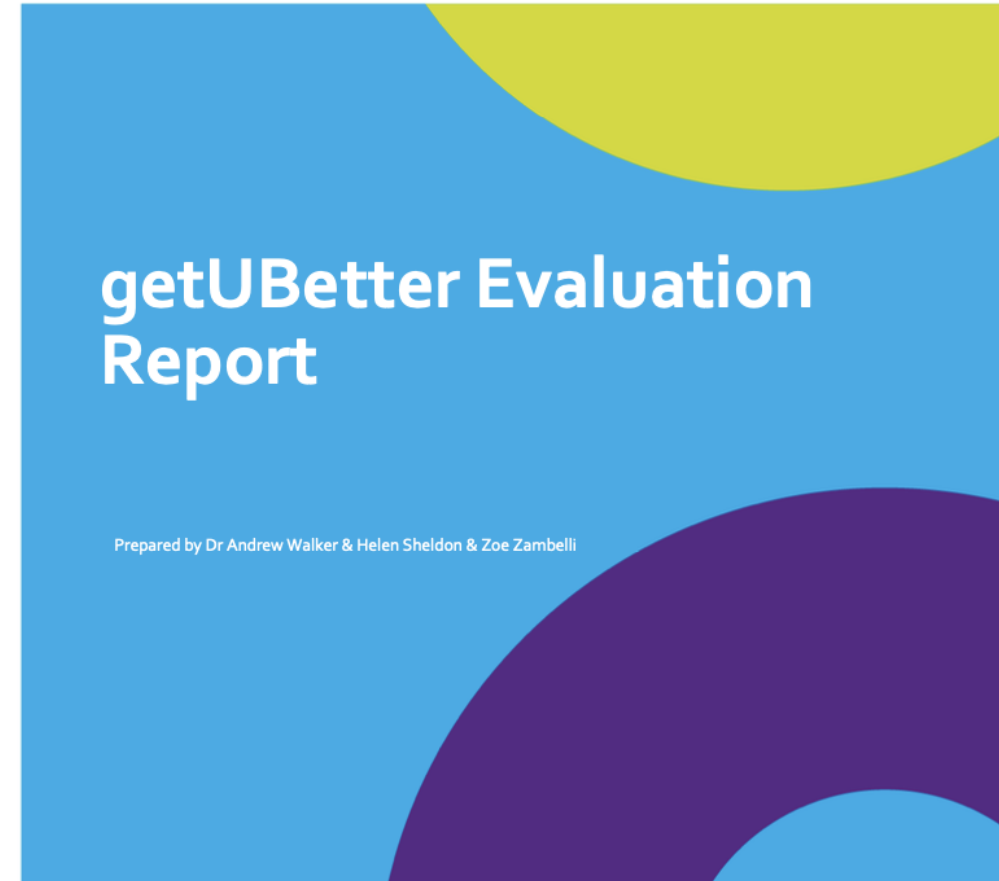
Reduces physio referrals by 20% (Hin 2021)

Reduces GP appointments by 13% (Hin 2021)

50% reduction in prescriptions (Hin 2021)

Positive user and clinician feedback (local data and Hin 2021)

Behaviour change evaluation (Berry et al 2021)



JMIR FORMATIVE RESEARCH

Berry et al

Original Paper

## A Tailored App for the Self-management of Musculoskeletal Conditions: Evidencing a Logic Model of Behavior Change

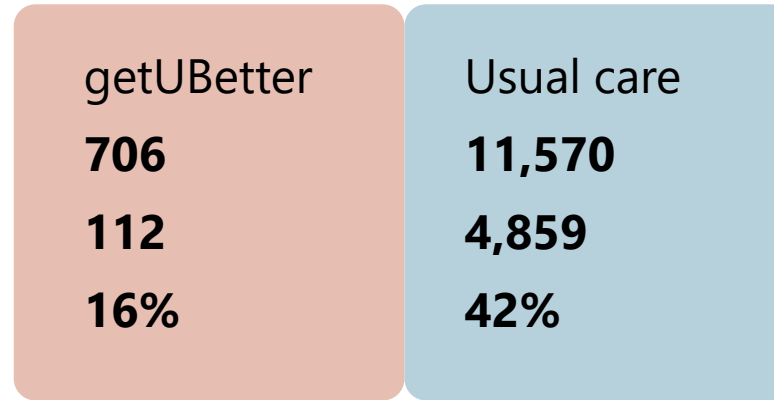
Alice Berry<sup>1</sup>, BSc (Hons), MSc, PhD; Carey McClellan<sup>2</sup>, BSc (Hons), PhD; Ben Wanless<sup>3</sup>, BSc (Hons), MSc; Nicola Walsh<sup>1</sup>, BSc, MSc, PhD



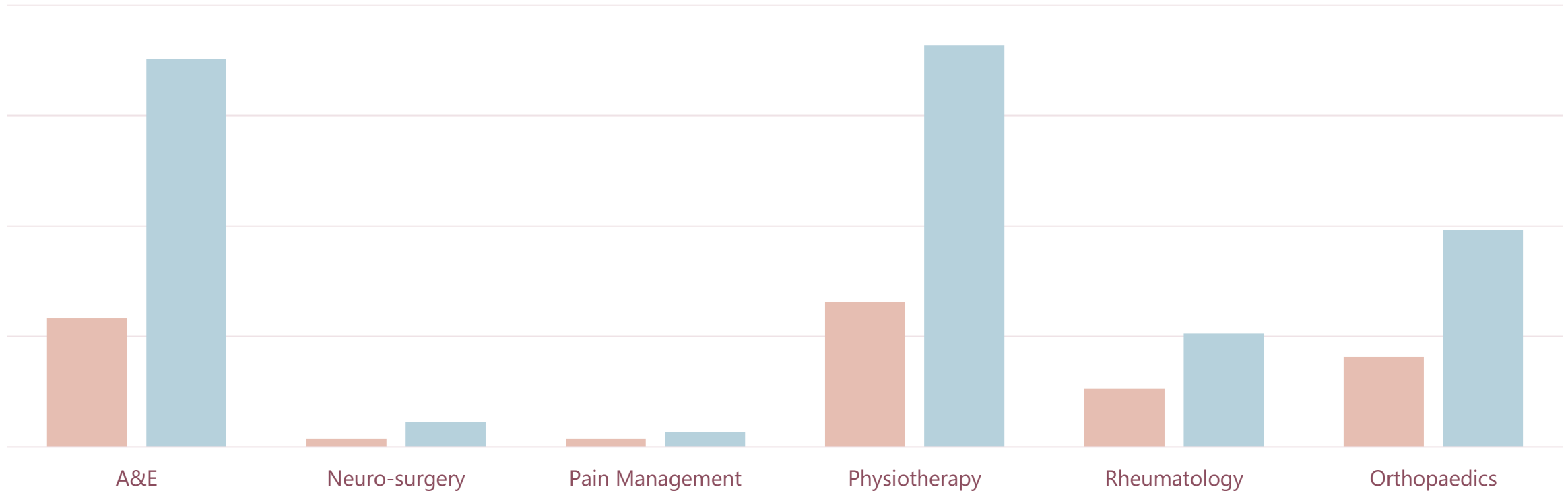
# Real world data - Quantitative

## Secondary Care Impact

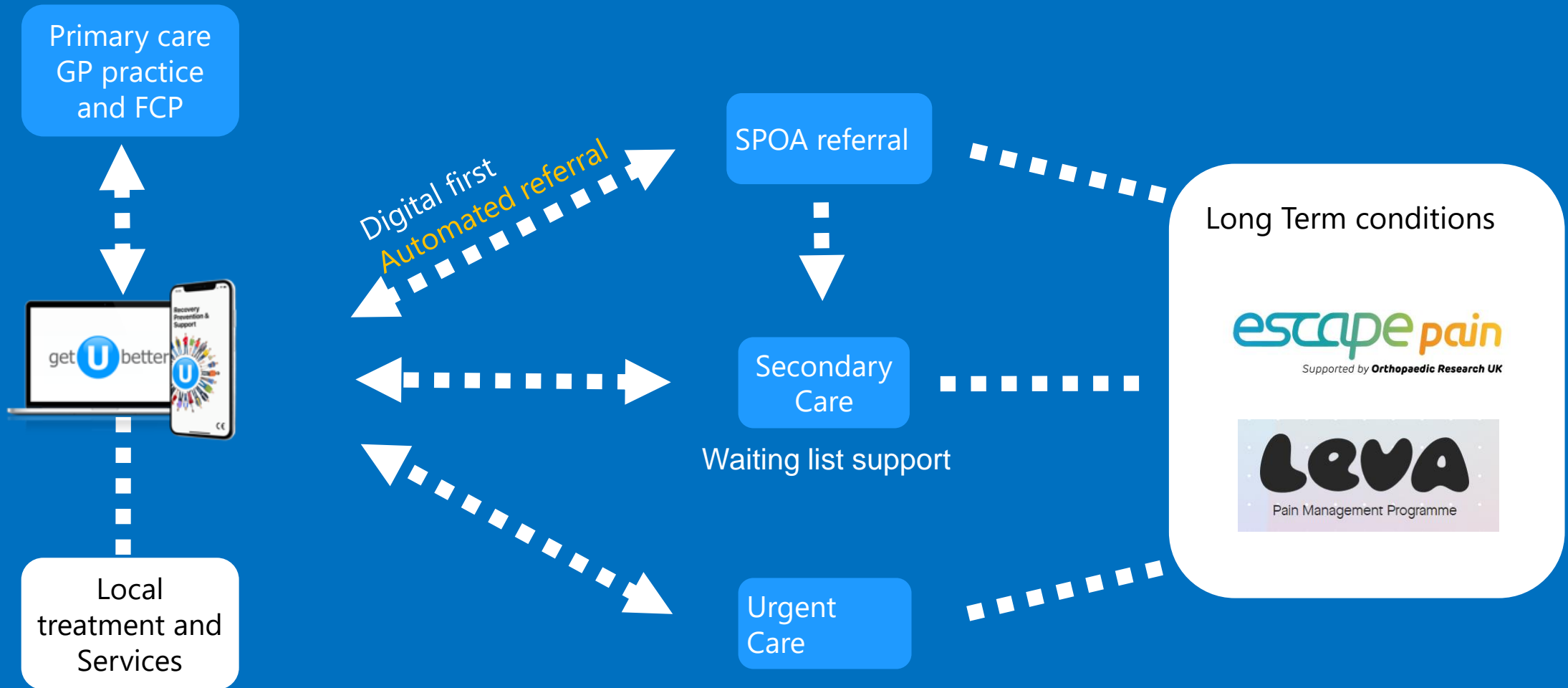
People  
Went on to have hospital appt



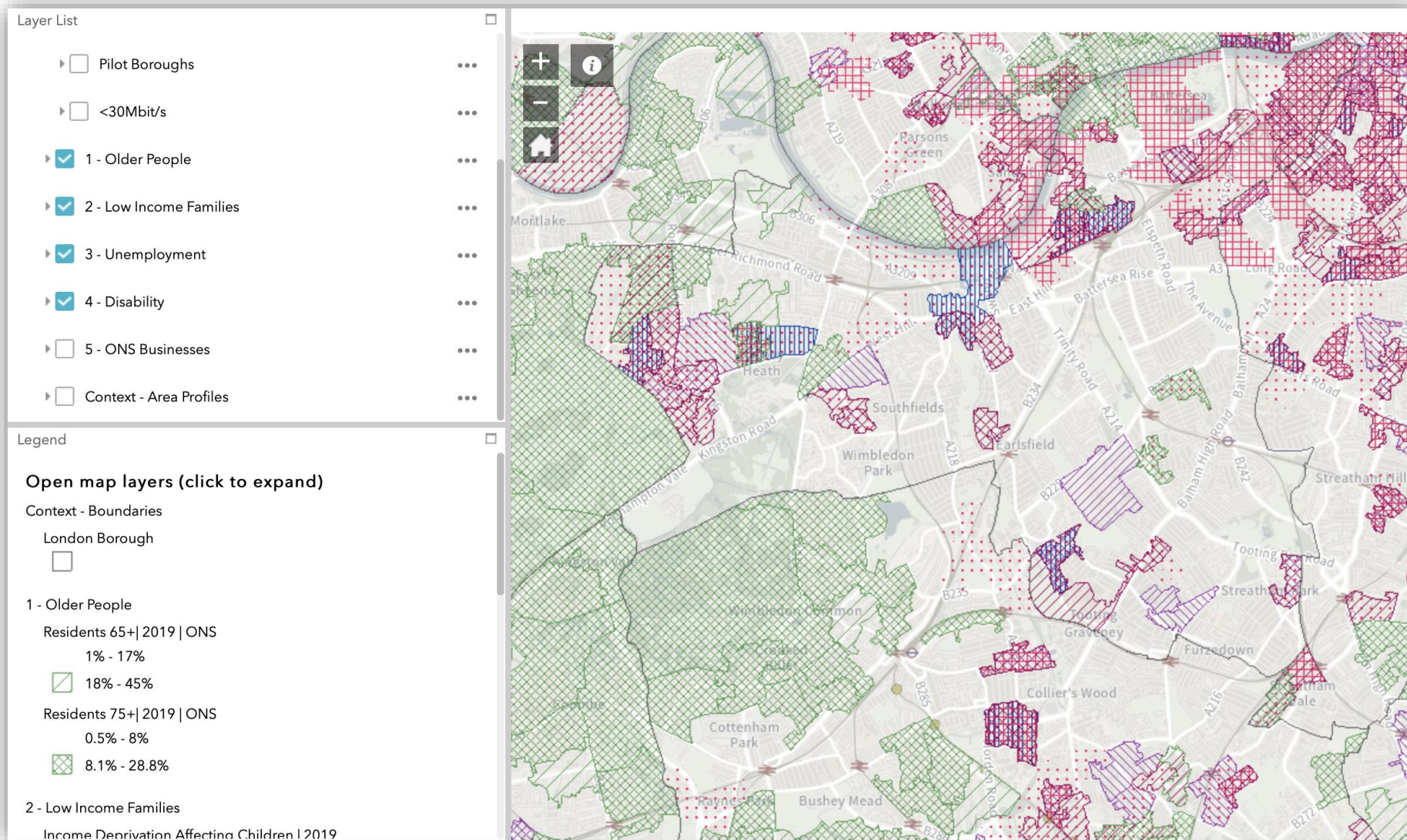
Pre-pandemic data extracted from primary care and cross-referenced against secondary care appointments



# A whole pathway approach to self-management



# Digital Inclusion



## Phase 1 Mapping

Using the London Office of Technology & Innovation (LOTI) inclusion toolkit we mapped areas of potential digital exclusion

# Digital Inclusion



Results due late 2023 

## Phase 2 - Questionnaires

Acceptability of the SWL Self-Management app for patients and clinicians.

- Theoretical Framework of Acceptability ([Sekhon et al 2017](#))
- Theoretical Domains Framework (TDF) v2 ([Michie et al 2014](#) and [Atkins et al 2017](#))



## Phase 3 – Semi-structured Interviews

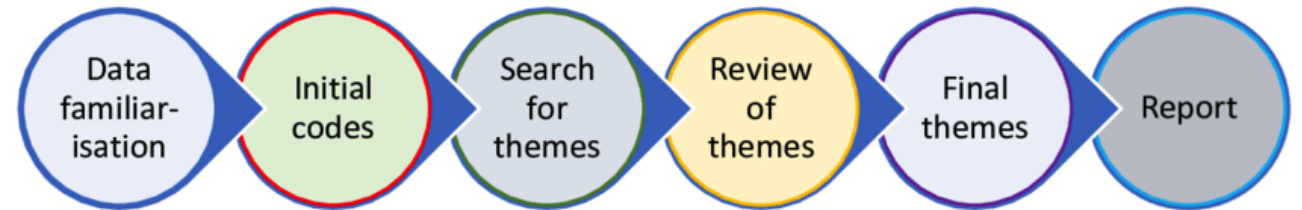
We used the Theoretical Domains Framework (TDF) v2 ([Michie et al 2014](#) and [Atkins et al 2017](#)) to create a topic guide for patient and clinician interviews.

# Digital Inclusion



## Results

We used a six step thematic analysis process as described by Braun and Clarke (2006)



**Beliefs**



**Barriers**



**Enablers**

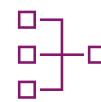


**Solutions**





@benwanno



|                    | Published Evidence | Orcha rating | DTAC | System Integration | Focus   | Country           |
|--------------------|--------------------|--------------|------|--------------------|---------|-------------------|
| Self-Back          | ✓                  | ✗            | ✗    | ✗                  | LBP     | Denmark<br>Norway |
| Joint Academy      | ✓                  | ✗            | ✗    | ✗                  | OA      | Sweden            |
| Hinge Health       | ✓                  | ✗            | ✗    | ✗                  | All MSK | USA               |
| Kaia               | ✓                  | ✗            | ✗    | ✗                  | All MSK | Germany           |
| getUBetter         | ✓                  | 91%          | ✓    | EMIS               | All MSK | UK                |
| ESCAPE-Pain Online | ✗                  | 73%          | ✗    | ✗                  | OA      | UK                |
| Ampersand          | ✗                  | 70%          | ✓    | ✗                  | RA      | UK                |
| Suffolk AHP        | ✗                  | ✗            | ✗    | ✗                  | AI MSK  | UK                |
| exi                | ✗                  | ✗            | ✗    | ✗                  | LTC's   | UK                |
| Rehab Me           | ✗                  | ✗            | ✗    | ✗                  | All MSK | UK                |