

RETURN TO PRACTICE

Thinking of returning to nursing? Your skills and experience are needed more than ever before, and there has never been a better time to return to nursing and it is easier than you might think.

[HTTPS://WWW.YOUTUBE.COM/EMBED/SIKA7J2XIFG?FEATURE=OEMBED](https://www.youtube.com/embed/sika7j2xifg?feature=oembed)



Return to practice programme

The Return to Practice Programme prepares you for re-entry into the professional register and is an essential requirement for returning to nursing and regaining registration. The programme will refresh your skills, leaving you ready to return to nursing with confidence. It involves a combination of classroom and placement-based learning, so you can get stuck in right from the start.

Who is the Programme Suitable for?

The Return to Practice programme offers nurses with a lapsed registration an opportunity to become active again on the NMC register with a view that this will lead to employment as a registered nurse.



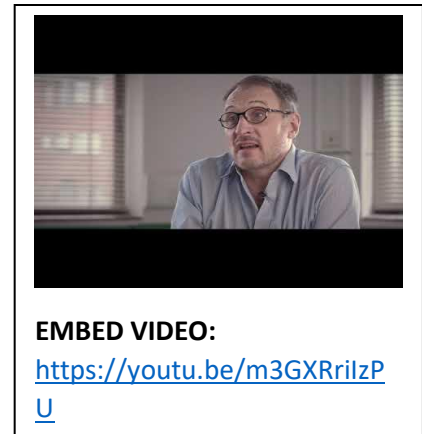
EMBED VIDEO:

<https://youtu.be/gi3xotVbri4>

Programmes available in London: How do I apply?

Led by supportive tutors, assessors and supervisors, there are 4 University programmes available across London, all created to refresh your nursing skills so that you're ready to return to practice. Please click on the links below to be taken to the University websites to find out more about the programmes and how to apply:

- [Greenwich University](#)
- [Kingston and St Georges](#)
- [City University](#)
- [University of Hertfordshire](#)



If you are looking to return to a specific field of Nursing, such as Mental Health Nursing, Child Nursing, or Learning Disability Nursing, please contact the University to ensure they offer the programme you require.

Financial support for your studies

You won't just be emotionally supported, you'll be financially supported too. NHS Health Education England (HEE) will provide funding towards your course fees. You'll also either be given a bursary to help cover any childcare, travel and book costs, or you will be paid a salary, depending on the route you take to return.

Key Contacts

If you would like to find out more information about return to practice courses, please email the Universities directly.

Programme Lead for:

- Kingston University: Helen Freedman: H.Freedman@sgul.kingston.ac.uk
- City University: Maria Lynch: Maria.Lynch@city.ac.uk
- University of Hertfordshire: Yvette Boamah - y.boamah@herts.ac.uk
- University of Greenwich: FEHHS-Programme-Support@greenwich.ac.uk

For more information about returning to practice, please email: returntopractice.london@hee.nhs.uk.

And to find out more about return to practice placements in South West London, please email SWL Return to Practice Lead: dawn.hunt4@nhs.net